

***NDRG1-PLAG1* and *TRPS1-PLAG1* Fusion Genes in Chondroid Syringoma**

IOANNIS PANAGOPOULOS¹, LUDMILA GORUNOVA¹, KRISTIN ANDERSEN¹,
MARIUS LUND-IVERSEN², INGVID LOBMAIER², FRANCESCA MICCI¹ and SVERRE HEIM^{1,3}

¹*Section for Cancer Cytogenetics, Institute for Cancer Genetics and Informatics,
The Norwegian Radium Hospital, Oslo University Hospital, Oslo, Norway;*

²*Department of Pathology, The Norwegian Radium Hospital, Oslo University Hospital, Oslo, Norway;*

³*Institute of Clinical Medicine, Faculty of Medicine, University of Oslo, Oslo, Norway*

Abstract. *Background/Aim: Chondroid syringoma is a rare benign tumor emanating from sweat glands. Although rearrangements of the pleomorphic adenoma gene 1 (PLAG1) have been reported in such tumors, information on PLAG1 fusion genes is very limited. Materials and Methods: Cytogenetic, fluorescence in situ hybridization, RNA sequencing, array comparative genomic hybridization, reverse transcription polymerase chain reaction, and Sanger sequencing analyses were performed on two chondroid syringoma cases. Results: Both tumors had structural rearrangements of chromosome 8. An NDRG1-PLAG1 transcript was found in the first tumor in which exon 3 of PLAG1 was fused with exon 1 of NDRG1. A TRPS1-PLAG1 chimeric transcript was detected in the second chondroid syringoma in which exon 2 or exon 3 of PLAG1 was fused with exon 1 of TRPS1. Conclusion: The NDRG1-PLAG1 and TRPS1-PLAG1 resemble other PLAG1 fusion genes inasmuch as the expression of PLAG1 comes under the control of the NDRG1 or TRPS1 promoter.*

Chondroid syringoma, also known as mixed tumor of the skin, is a rare benign tumor emanating from sweat glands and able to display a wide array of histological patterns (1-5). It may have histological similarities with another benign exocrine gland tumor, pleomorphic adenoma or mixed tumor of the salivary glands, something that may cause differential

diagnostic difficulties (3, 5, 6). The name chondroid syringoma was coined by Hirsch and Helwing (3) because of the invariable presence in the tumor of sweat gland elements (syringoma) and because cartilage-like material (chondroid) was also present in most tumors they studied (3). Chondroid syringoma most commonly occurs in the head-and-neck region of middle-aged males (3, 5, 7-9) but can also be found in the axilla and on the anterior chest, trunk, extremities, and scrotum (3, 7, 10-19).

We studied genetically two chondroid syringomas finding fusion of the pleomorphic adenoma gene 1 (*PLAG1*) at 8q12.2 in one with the gene N-myc downstream regulated 1 (*NDRG1*), which maps to chromosome subband 8q24.22, and in the second with the gene transcriptional repressor GATA binding 1 (*TRPS1*), which maps to 8q23.3.

Materials and Methods

Ethics statement. The study was approved by the regional Ethics Committee (Regional komité for medisinsk forskningsetikk Sør-Øst, Norge, <http://helseforskning.etikkom.no>) and written informed consent was obtained from the patients. The ethics committee's approval included a review of the consent procedure. All patient information has been de-identified.

Case description

Case 1. A 60-year-old male without any relevant medical previous history was surgically treated for a tumor located at the left ankle. The tumor was found to be consistent with a chondroid syringoma. Surgical margins were doubtful. Six years later re-excision was performed. Macroscopically the tumor was lobulated, but well demarcated. The cut section was soft and gelatinous intermingled with harder areas. Microscopically the tumor was composed of small cystic spaces, areas with myxoid tissue and areas with solid growth of cubic epithelium (Figure 1A and B).

Case 2. A 59-year-old male was surgically treated for a tumor on the left thigh. The tumor was located in the subcutaneous adipose tissue, measuring 18 mm in greatest diameter. Macroscopically the

This article is freely accessible online.

Correspondence to: Ioannis Panagopoulos, Section for Cancer Cytogenetics, Institute for Cancer Genetics and Informatics, The Norwegian Radium Hospital, Oslo University Hospital, Montebello, PO Box 4954 Nydalen, NO-0424 Oslo, Norway. Tel: +47 22782362, e-mail: ioannis.panagopoulos@rr-research.no

Key Words: Chondroid syringoma, *PLAG1*, fusion genes, *NDRG1-PLAG1*, *TRPS1-PLAG1*, chromosome 8.

tumor was white and with rubbery turgor. Microscopically the tumor was solid with cribriform growth of cubic cells separated by collagen bundles and small areas with myxoid material, intermingled with loose arranged spindle cells (Figure 1C and D).

G-banding and karyotyping. Fresh tissue from a representative area of the tumors was analyzed cytogenetically as previously described (20).

Fluorescence in situ hybridization (FISH) analysis. In order to characterize the ring and the der(15) chromosome of case 1 (see below), FISH was performed on metaphase spreads using whole chromosome painting probes for chromosomes 8 and 15 (Cytocell, Oxford Gene Technology, Begbroke, Oxfordshire, UK).

The BAC probes were purchased from BACPAC Resource Center located at the Children's Hospital Oakland Research Institute (Oakland, CA) (<https://bacpacresources.org/>) (Table I). Detailed information on the FISH procedure was given elsewhere (21).

DNA was extracted and probes were labelled and hybridized using Abbott's nick (Abbott Molecular, Des Plaines, IL, USA) translation kit according to the manufacturer's recommendations. The *PLAG1* probe was labelled with Texas Red-5-dCTP (PerkinElmer, Boston, MA, USA) in order to obtain a red signal. The probes for *NDRG1* and *TRPS1* were labelled with fluorescein-12-dCTP (PerkinElmer, Boston, MA, USA) in order to obtain green signals. FISH mapping of the probes on normal controls was performed to confirm their chromosomal location. Chromosome preparations were counterstained with 0.2 µg/ml DAPI and overlaid with a 24×50 mm² coverslip. Fluorescent signals were captured and analyzed using the CytoVision system (Leica Biosystems, Newcastle, UK).

Array comparative genomic hybridization (aCGH) analysis. Genomic DNA was extracted using the Maxwell RSC Instrument and the Maxwell RSC Tissue DNA Kit (Promega, Madison, USA). The concentration was measured using the Quantus Fluorometer and the QuantiFluor ONE dsDNA System (Promega, Madison, WI, USA). Promega's human genomic female DNA was used as reference DNA. For aCGH, CytoSure array products were used (Oxford Gene Technology) according to the company's protocols. Thus, the CytoSure Genomic DNA Labelling Kit was used for labelling of 1 µg of each patient and reference DNAs and the CytoSure Cancer +SNP array for hybridization. The slides were scanned in an Agilent scanner using the Agilent Feature Extraction Software (version 10.7.3.1). Data were analysed with the CytoSure Interpret analysis software (version 4.9.40). The genomic imbalances were identified using the Circular Binary Segmentation (CBS) algorithm (22) and added a custom-made aberration filter defining a copy number aberration (CNA) as a region with a minimum five probes gained/lost. Annotations are based on human genome build 19.

RNA sequencing. Total RNA was extracted from frozen (−80°C) tumor tissue adjacent to that used for cytogenetic analysis and histologic examination using miRNeasy Mini Kit (Qiagen, Hilden, Germany). For case 1, one µg of total RNA from the tumor was sent to the Genomics Core Facility at the Norwegian Radium Hospital, Oslo University Hospital (<http://genomics.no/oslo/>) for high-throughput paired-end RNA-sequencing according to the Illumina TruSeq Stranded mRNA protocol. The softwares FusionCatcher, deFuse, TopHat-Fusion, and FuSeq were used to find fusion transcripts (23-28). In addition, the “grep” command was used to search the fastq files of the sequence data for *PLAG1* sequence. The

principle of this approach has been described elsewhere (29, 30). The search term was the 20-nucleotide-sequence (nt) “ATTGGCCAAAATGGGAAGGA” which corresponds to the first 20 nt in exon 3 of *PLAG1* or nt 286-305 in the *PLAG1* reference sequence (accession number: NM_002655.2).

Reverse transcription (RT) PCR and Sanger sequencing analyses. The primers used for PCR amplifications and Sanger sequencing analyses are shown in Table II. One µg of total RNA was reverse-transcribed in a 20 µl reaction volume using iScript Advanced cDNA Synthesis Kit for RT-qPCR according to the manufacturer's instructions (Bio-Rad, Hercules, CA, USA).

For amplification of the *NDRG1-PLAG1* fusion transcript, the primer combinations were NDRG1-1F1/PLAG1-498R1 and NDRG1-23F1/PLAG1-458R1. For amplification of the *TRPS1-PLAG1* fusion transcript, the primer combinations were TRPS1-200F1/PLAG1-498R1 and TRPS1-318F1/PLAG1-458R1. All PCR amplifications were performed in 25 µl reaction volume which contained 12.5 µl Premix Ex Taq™ DNA Polymerase Hot Start Version (Takara Bio Europe, Saint-Germain-en-Laye, France), 1 µl cDNA template, and 0.4 µM of each of the forward and reverse primers. PCR amplifications were run on a C-1000 Thermal cycler (Bio-Rad) and the cycling was at 94°C for 30 s, followed by 35 cycles of 7 s at 98°C, 30 s at 60°C, 30 s at 72°C, and a final extension for 5 min at 72°C. Three µl of the PCR products were stained with GelRed (Biotium, Fremont, California, USA), analyzed by electrophoresis through 1% agarose gel, and photographed. The remaining PCR products were purified using the MinElute PCR Purification Kit (Qiagen) and direct sequenced using the dideoxy procedure with the BigDye terminator v1.1 cycle sequencing kit (ThermoFisher Scientific, Waltham, Massachusetts, USA) on the Applied Biosystems SeqStudio Genetic Analyzer system. The basic local alignment search tool (BLAST) software (<http://blast.ncbi.nlm.nih.gov/Blast.cgi>) was used for computer analysis of sequence data (31).

Results

Case 1. The G-banding analysis supported by whole chromosome paint FISH results yielded the karyotype 50,XY,+5,r(8),+9,+14,+15,der(15)t(8;15)(?;?q15)x2, der(19)t(15;19)(q22;q13), add(21)(p13) (Figure 2A and B).

Examination of the RNA sequencing data with four different programs did not identify any fusion genes related to chromosome 8 (data not shown). Using the “grep” command and a search term corresponding to the first 20 nt in the exon 3 of *PLAG1* on the raw sequencing data, which were in the text-based fastq format, only 5 unique sequences were extracted (Table III). Using the BLAST algorithm on the NCBI National Center for Biotechnology Information database (<https://blast.ncbi.nlm.nih.gov/Blast.cgi>) we aligned each of the above-mentioned sequences with the human genomic plus transcript database. The alignment showed that 3 sequences were from the *PLAG1* gene whereas 2 sequences were hybrids containing sequences from exon 3 of *PLAG1* (sequence with accession number NM_002655.2) and exon 1 of *NDRG1* (sequence with accession number NM_006096.4) (Table III).

RT-PCR with the primer combinations NDRG1-1F1/PLAG1-498R1 and NDRG1-23F1/PLAG1-458R1 amplified a 352 bp

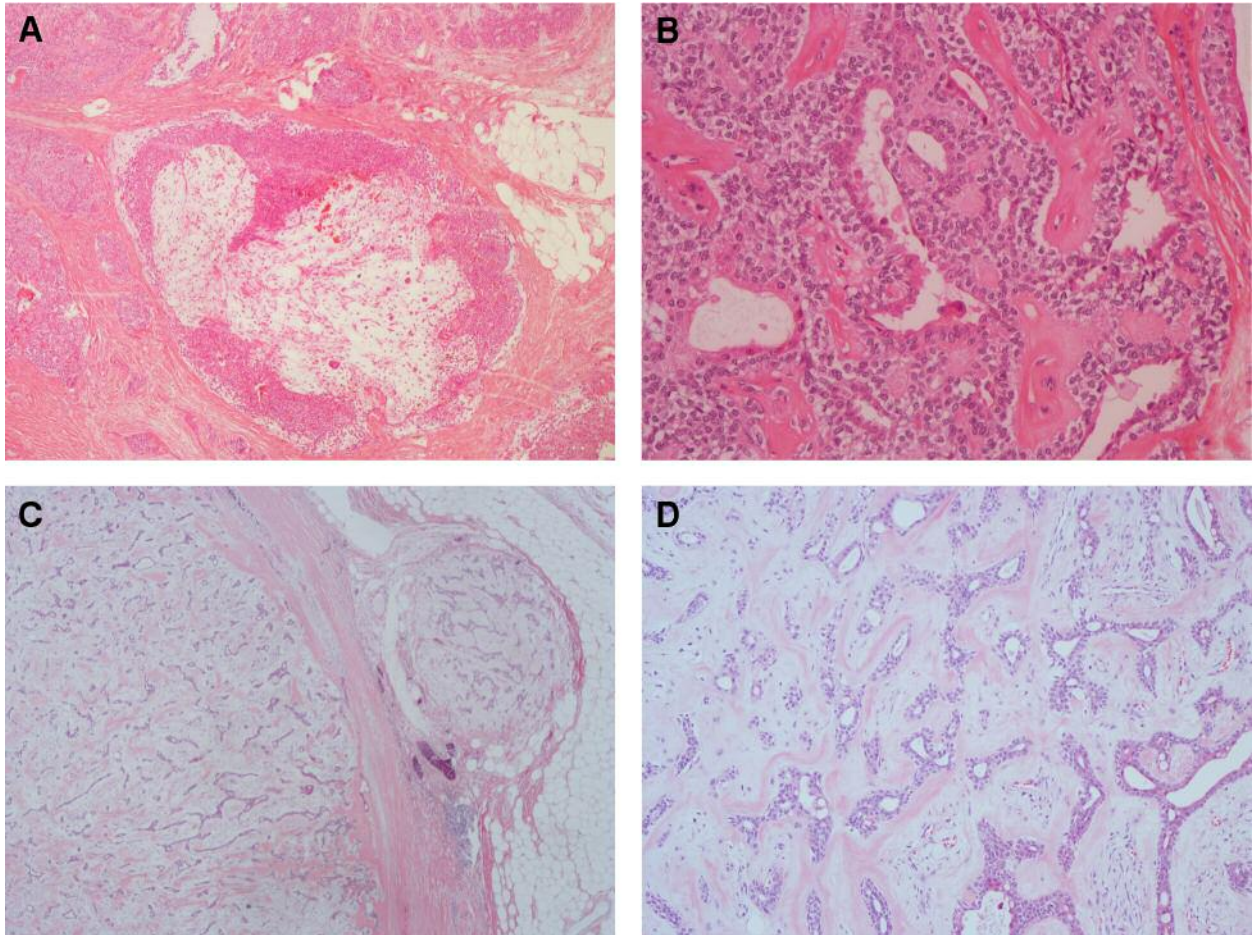


Figure 1. Microscopic examination of chondroid syringoma from case 1 (A and B) and case 2 (C and D). (A) Tumor with myxoid areas, $\times 40$. (B) Ductal structures embedded in solid growth of cubic epithelial cells, intermingled with collagen band, $\times 200$. (C) Partly capsulated tumor with slit like ductal spaces embedded in chondromyxoid stroma, $\times 20$. (D) High magnification of the capsulated tumor (from C), $\times 100$.

Table I. BAC probes used for FISH experiments.

BAC clones	Chromosome mapping	Targeted gene	Position on GRCh38/hg38 assembly	Labelling
RP11-22E14	8q12.1	<i>PLAG1</i>	chr8:55956731-56135453	Red
RP11-446E9	8q12.1	<i>PLAG1</i>	chr8:55870288-56054628	Red
RP11-1145H17	8q24.22	<i>NDRG1</i>	chr8:133321482-133454497	Green
RP11-167A6	8q24.22	<i>NDRG1</i>	chr8:133368156-133568465	Green
RP11-17O18	8q23.3	<i>TRPS1</i>	chr8:115692191-115877698	Green

Table II. Primers used for PCR amplification and Sanger sequencing analyses.

Name	Sequence (5'->3')	Position	Reference sequence	Gene
PLAG1-458R1	TTGTTGGACACTTGGGAAGTCC	480-458	NM_002655.2	<i>PLAG1</i>
PLAG1-498R1	GGAATGACAGTGGCCATCGCA	518-498	NM_002655.2	<i>PLAG1</i>
NDRG1-1F1	AAACCTCGCCTGGCTCCCAG	1-20	NM_006096.4	<i>NDRG1</i>
NDRG1-23F1	GAAGCTCGTCAGTTCACCATCCG	29-51	NM_006096.4	<i>NDRG1</i>
TRPS1-200F1	ACCGGGCACATCCTTGCTCTATT	200-222	NM_014112.5	<i>TRPS1</i>
TRPS1-318F1	CCCCCGCAATAATCCAAGATCA	318-339	NM_014112.5	<i>TRPS1</i>
TRPS1-353F1	CAGAAGACGGTTCATGGCTTTGG	353-375	NM_014112.5	<i>TRPS1</i>

and a 286 bp cDNA fragment, respectively (Figure 3A). Direct sequencing of them showed that they were *NDRG1-PLAG1* chimeric cDNA fragments (Figure 3B). The fusion point was identical to that found by the analysis of the RNA sequencing data. Thus, the non-coding sequence exon 1 of *NDRG1* (nt 119 in sequence with accession number NM_006096.4) was fused to exon 3 of *PLAG1* (nt 286 in NM_002655.2) (Figure 3B).

FISH analysis on metaphase spreads showed that the *NDRG1-PLAG1* fusion gene was on the ring chromosome (Figure 3C).

Case 2. The G-banding analysis yielded the karyotype 46,XY,del(8)(q12q23)[10] (Figure 4A). aCGH also detected a large deletion in the q arm of chromosome 8 (Figure 4B). Based on the hg19 assembly, the deletion started at position Chr8:57120365 in intron1 of *PLAG1* and ended at Chr8:116661489 in exon 1 of *TRPS1* (Figure 4B). Thus, aCGH data were in agreement with the results of G-banding analysis and suggested that a *TRPS1-PLAG1* fusion gene had been formed as a result of the deletion.

RT-PCR with the primer combinations TRPS1-200F1/PLAG1-498R1 amplified two, a 570 bp and a 465 bp, cDNA fragments (Figure 4C). Direct sequencing of these fragments showed that both were *TRPS1-PLAG1* chimeric cDNA fragments. In the 570 bp long fragment, exon 1 of *TRPS1* was fused to exon 2 of *PLAG1* whereas in the 465 bp fragment, exon 1 of *TRPS1* was fused to exon 3 of *PLAG1* (Figure 4D).

RT-PCR with the primer combinations TRPS1-318F1/PLAG1-458R1 also amplified two, a 414 bp and a 309 bp, cDNA fragments (Figure 4C). The sequence of these fragments confirmed the presence of the above-mentioned *TRPS1-PLAG1* fusion transcripts (Figure 4D).

FISH analysis on metaphase spreads showed that the *TRPS1-PLAG1* fusion gene was on the del(8)(q12q23) chromosome (Figure 4E).

Discussion

We report the identification of two fusion genes, *NDRG1-PLAG1* and *TRPS1-PLAG1*, in two chondroid syringomas. To the best of our knowledge, the *NDRG1-PLAG1* fusion gene is reported here for the first time. However, the *TRPS1-PLAG1* gene fusion was recently reported in a myoepithelial tumor of soft tissue and was also found to be recurrent in a subset of uterine myxoid leiomyosarcomas with *PLAG1* rearrangements (Table IV) (32, 33).

Chondroid syringoma and its more aggressive counterpart, malignant chondroid syringoma, are included among cutaneous myoepithelial neoplasms (34-38). Recently, we reported a malignant chondroid syringoma which had a t(X;6)(p11;p21) as the sole karyotypic aberration and demonstrated that the molecular consequence of that

translocation was fusion of the PHD finger protein 1 (*PHF1*) gene from 6p21 with the transcription factor binding to IGHM enhancer 3 gene (*TFE3*) from Xp11 (39). In the present study, we found *NDRG1-PLAG1* and *TRPS1-PLAG1* in chondroid syringomas. Thus, although the data are extremely limited, malignant chondroid syringoma and benign chondroid syringoma seem to be developed through different pathogenetic mechanisms.

Genetic studies of both cutaneous and soft tissue myoepithelial neoplasms have demonstrated considerable genetic heterogeneity (40-46). In some tumors, rearrangements of the Ewing sarcoma breakpoint region 1 gene (*EWSR1*) leading to the fusion genes *EWSR1-ZNF444*, *EWSR1-PBX1*, *EWSR1-PBX3* or *EWSR1-POU5F1* were found (40, 43-45, 47). In benign myoepithelial tumors, rearrangements of *PLAG1* have been found (41, 42, 48, 49). Matsuyama *et al.* (48) studied 16 cutaneous mixed tumors and found that all of them expressed *PLAG1*, predominantly in cells with myoepithelial or chondroid differentiation. Because they did not detect the fusion genes *CTNBN1-PLAG1*, *LIFR-PLAG1*, *CHCHD7-PLAG1* which have been reported in pleomorphic adenomas of the salivary gland, they concluded that the mechanism of *PLAG1* overexpression in cutaneous mixed tumors may be different from that in pleomorphic adenomas (48, 50-52). Bahrami and co-workers (42) found *PLAG1* rearrangements in 8 out of 11 (73%) benign myoepitheliomas/mixed tumors of the skin and soft tissue. Antonescu and co-workers (41) detected *PLAG1* rearrangements in 13 out of 35 (37%) myoepithelial tumors lacking *EWSR1* and *FUS* rearrangements and identified a *LIFR-PLAG1* fusion in one case (Table IV). Recently, Russell-Goldman and co-workers (49) showed that *PLAG1* is expressed in skin mixed tumors referred to as being of the apocrine type but not in eccrine-type tumors. The conclusion from the above-mentioned studies was that a subset of benign myoepitheliomas/mixed tumors of the skin and soft tissue exists that are genetically related to their salivary gland counterparts (41, 42, 46, 48, 49). *PLAG1* together with *PLAGL1* (at chromosome subband 6q24.2) and *PLAGL2* (at 20q11.21) constitute the *PLAG* gene family coding for zing finger proteins (53-55). All three members of the family are implicated in neoplasia (54, 55). *PLAG1* was shown to be rearranged in pleomorphic adenomas of the salivary glands, lipoblastomas, as well as other tumors *via* chromosomal translocations targeting 8q12 (50-52, 56, 57) (Table IV). *PLAGL1* functions as a suppressor of cell growth and is often deleted or methylated and silenced in cancer cells (58-62). A *MYB-PLAGL1* fusion was reported in three acute lymphoblastic leukemias (63-65). *PLAGL2* is a proto-oncogene more structurally and functionally similar to *PLAG1* than is *PLAGL1* (53-55, 66-68). Overexpression of *PLAGL2* was seen in acute myeloid leukemia, bladder urothelial carcinoma, and colorectal cancer (67-71).

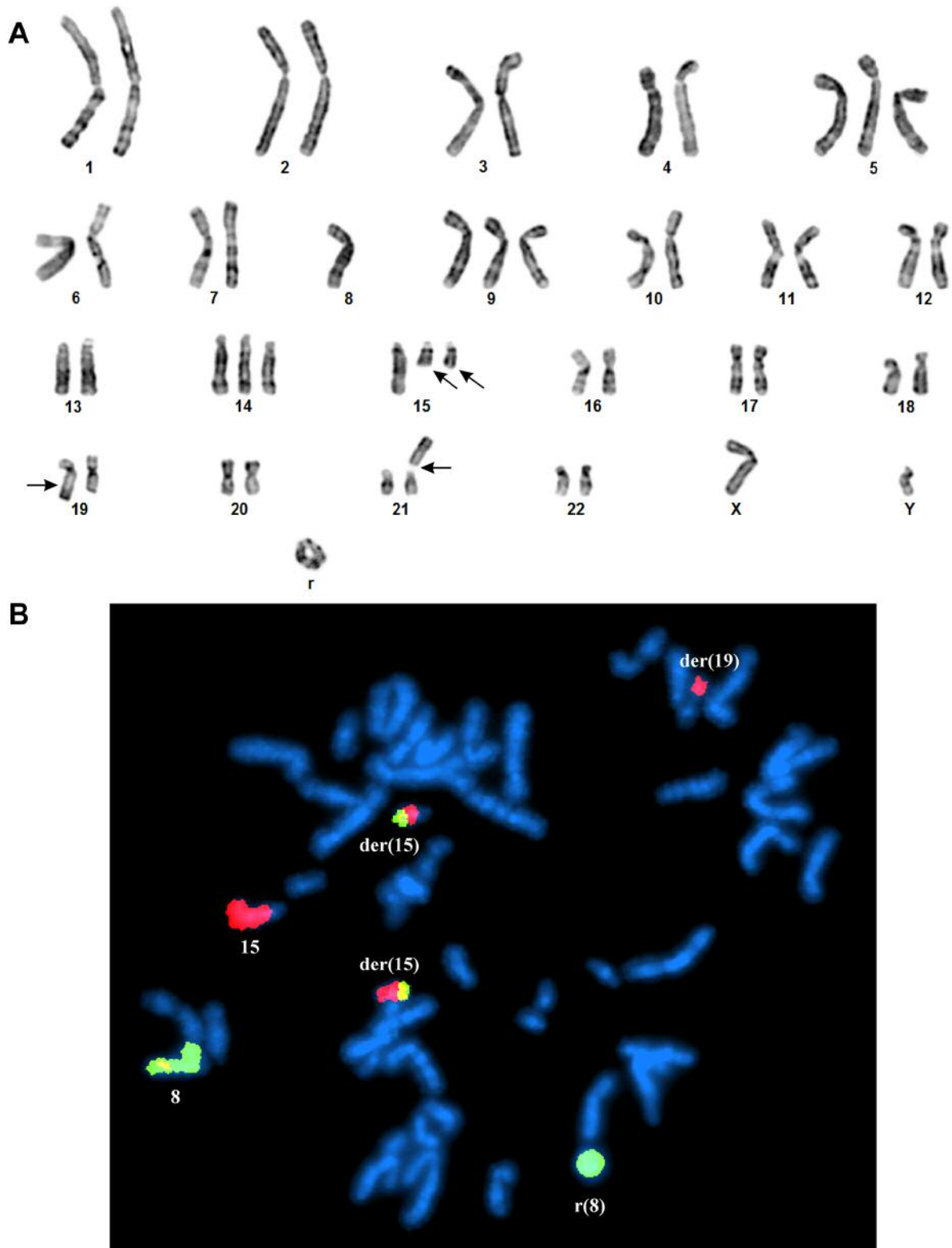


Figure 2. G-banding and FISH analyses of the case 1 of chondroid syringoma. (A) Representative karyogram demonstrating the chromosome aberrations (breakpoints are shown by arrows). (B) FISH using whole chromosome painting probes for chromosome 8 (green signal) and chromosome 15 (red signal) shows the normal chromosomes 8 and 15, the ring chromosome consisting of chromosome 8 material, the two *der(15)t(8;15)*, and the *der(19)t(15;19)*.

Table III. The retrieved sequences from the fastq file of the RNA sequencing using the “grep” command and the search term “ATTGGCCAAAATGGGAAGGA” which is the first 20 nt in the exon 3 of *PLAG1* to nt 286-305 in the *PLAG1* reference sequence with the accession number NM_002655.2.

Sequence	Gene
ACCGGTTCCATTAGAGGATAGTCCATTTTCACTTTTTTTTCATAGATTGGCCAAAATGGGAAGGATTGGATTCC	<i>PLAG1</i>
CTTCTCCCTCGCGTTAG ATTGGCCAAAATGGGAAGGATTGGATTCCACTCTCTTCCACGAAGAGTCAATGGGAC	<i>NDRG1-PLAG1</i>
CCTCGCGTTAG ATTGGCCAAAATGGGAAGGATTGGATTCCACTCTCTTCCACGAAGAGTCAATGGGACTGGCTAA	<i>NDRG1-PLAG1</i>
CCCAGATTGGCCAAAATGGGAAGGATTGGATTCCACTCTCTTCCACGAAGAGTCAATGGGACTGGCTAAGATCAA	<i>PLAG1</i>
GTTAGATTGGCCAAAATGGGAAGGATTGGATTCCACTCTCTTCCACGAAGAGTCAATGGGACTGGCTAAGATCAA	<i>PLAG1</i>

Table IV. The *PLAG1* fusion genes which are currently reported in various neoplasias. *PLAG1* maps to chromosome subband 8q12.1, its position is chr8:56,160,909-56,211,273 (based on GRCh38/hg38 assembly) and its orientation is from telomere (tel) to centromere (cen).

Cytogenetic map location of 5' partner gene	Position of 5' partner gene on GRCh38/hg38 assembly	Orientation of 5' partner gene	5' partner gene	Neoplasia	Reference
1p35.2	chr1:30,931,506-31,065,717	Cen->tel	<i>PUM1</i>	Mesenchymal tumor	(80)
2q32.2	chr2:188,974,320-189,012,746	Cen->tel	<i>COL3A1</i>	Lipoblastoma	(81)
3p22.1	chr3:41,194,741-41,239,949	Tel->cen	<i>CTNNB1</i>	Pleomorphic salivary gland adenoma	(51)
5p13.1	chr5:38,474,963-38,595,404	Cen->tel	<i>LIFR</i>	Pleomorphic salivary gland adenoma and soft tissue myoepithelial tumor	(41, 52)
7q21.3	chr7:94,394,561-94,431,232	Cen->tel	<i>COL1A2</i>	Lipoblastoma	(57)
8p11.23	chr8:38,411,139-38,468,834	Cen->tel	<i>FGFR1</i>	Pleomorphic salivary gland adenoma	(82)
8q11.23	chr8:53,966,556-54,022,448	Tel->cen	<i>TCEA1</i>	Pleomorphic salivary gland adenoma	(50, 56)
8q12.1	chr8:56,211,789-56,218,809	Cen->tel	<i>CHCHD7</i>	Pleomorphic salivary gland adenoma	(50)
8q12.1	chr8:60,516,987-60,623,644	Cen->tel	<i>RAB2A</i>	Lipoblastoma	(81)
8q23.3	chr8:115,408,496-115,669,001	Tel->cen	<i>TRPS1</i>	Soft tissue myoepithelial tumor, uterine myxoid leiomyosarcoma, and chondroid syringoma	(32, 33), Present study
8q24.13	chr8:121,612,116-121,641,440	Tel->cen	<i>HAS2</i>	Lipoblastoma	(57)
8q24.22	chr8:133,237,176-133,297,586	Tel->cen	<i>NDRG1</i>	Chondroid syringoma	Present study
14q24.1	chr14:67,865,032-68,683,118	Cen->tel	<i>RAD51B</i>	Lipoblastoma	(83)

The characteristics of the *PLAG1*-reported fusion genes found in pleomorphic adenomas of the salivary glands, lipoblastomas, and other tumors are that the chromosome rearrangements result in fusion of the 5'-non-coding region of *PLAG1* with the partner gene's 5'-non-coding region exchanging the two genes' regulatory elements. Promoter swapping between *PLAG1* and the fusion partner thus takes place and the expression of *PLAG1* comes under the control of the other gene's promoter leading to overexpression or ectopic activation of *PLAG1* (51, 52, 54, 56, 57). Overexpression or ectopic activation of *PLAG1* in its turn leads to deregulation of *PLAG1*-target genes and tumor formation (72-75).

In vitro studies showed that ectopic expression of *PLAG1* in NIH3T3 cells results in loss of cell-cell contact inhibition and anchorage-independent growth. *PLAG1*-expressing NIH3T3 cells induce tumors in nude mice (66). In transgenic

mice, targeted *PLAG1* overexpression in salivary or mammary glands resulted in tumor development (76, 77). *PLAG1* was found to regulate the expression of the *IGF2* gene coding for insulin-like growth factor 2, to upregulate genes which are associated with IGF and WNT signaling, and to deregulate a plethora of long non-coding RNAs (54, 66, 72-75, 78, 79).

NDRG1-PLAG1 and *TRPS1-PLAG1* share characteristics of other *PLAG1* fusion genes. In the first tumor we analyzed, the untranslated exon 3 of *PLAG1* fused with exon 1 of *NDRG1*. Thus, *PLAG1* expression came under the control of *NDRG1* promoter. *NDRG1* is ubiquitously expressed and codes for a cytoplasmic protein involved in stress responses, hormone responses, cell growth, and differentiation (<https://www.ncbi.nlm.nih.gov/gene/10397#gene-expression>). In the second tumor, exon 2 or exon 3 of *PLAG1* fused with exon 1 of *TRPS1* and the expression of *PLAG1* came under control of the *TRPS1* promoter. *TRPS1* is also ubiquitously expressed and codes for

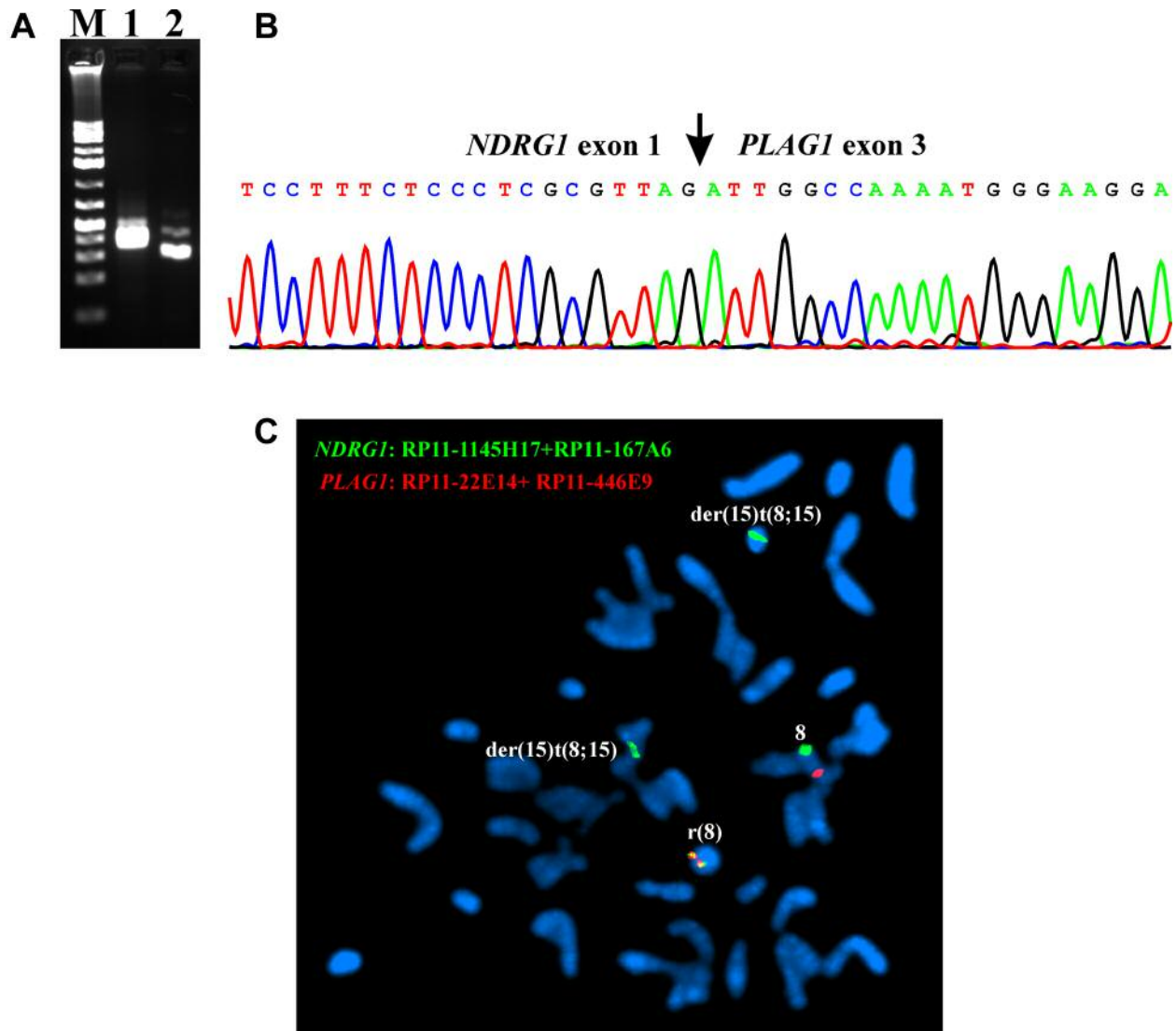


Figure 3. RT-PCR, Sanger sequencing, and FISH analyses of the case 1 of chondroid syringoma. (A) Gel electrophoresis showing the amplified *NDRG1-PLAG1* cDNA fragments using the primer combinations *NDRG1-1F1/PLAG1-498R1* (lane 1) and *NDRG1-23F1/PLAG1-458R1* (lane 2). M, *GeneRuler 1 Kb Plus DNA ladder* (ThermoFisher Scientific). (B) Partial sequence chromatograms of the cDNA amplified fragment showing the junction position of exon 1 of *NDRG1* with exon 3 of *PLAG1*. (C) FISH analysis on metaphase spreads with *PLAG1* probe (red signal) and *NDRG1* probe (green signal) showing that the *NDRG1-PLAG1* fusion gene was on the ring chromosome 8 (yellow signal). One copy of *PLAG1* (red signal) is on chromosome 8. *NDRG1* probe (green signal) hybridized also to chromosome 8 and the two *der(15)t(8;15)* chromosomes.

a transcription factor that represses GATA-regulated genes and binds to a dynein light-chain protein (<https://www.ncbi.nlm.nih.gov/gene/7227#gene-expression>).

The number of *PLAG1* fusion genes in various neoplasias until now, including the two present ones, is thirteen (Table IV). Worthy of mention is that in seven of them, the 5' fusion partner maps to chromosome 8: one to the p arm and six to the q arm. Evidently, recombinations involving chromosome 8, particularly the long arm, are for some reason particularly common events in *PLAG1* activating fusions.

Conflicts of Interests

No potential conflicts of interest exist.

Authors' Contributions

IP designed and supervised the research, performed molecular genetic experiments, bioinformatics analysis, and wrote the article. LG performed cytogenetic analysis and evaluated the FISH data. KA performed molecular genetic experiments, FISH analysis, and evaluated the data. ML-I performed the pathological examination.

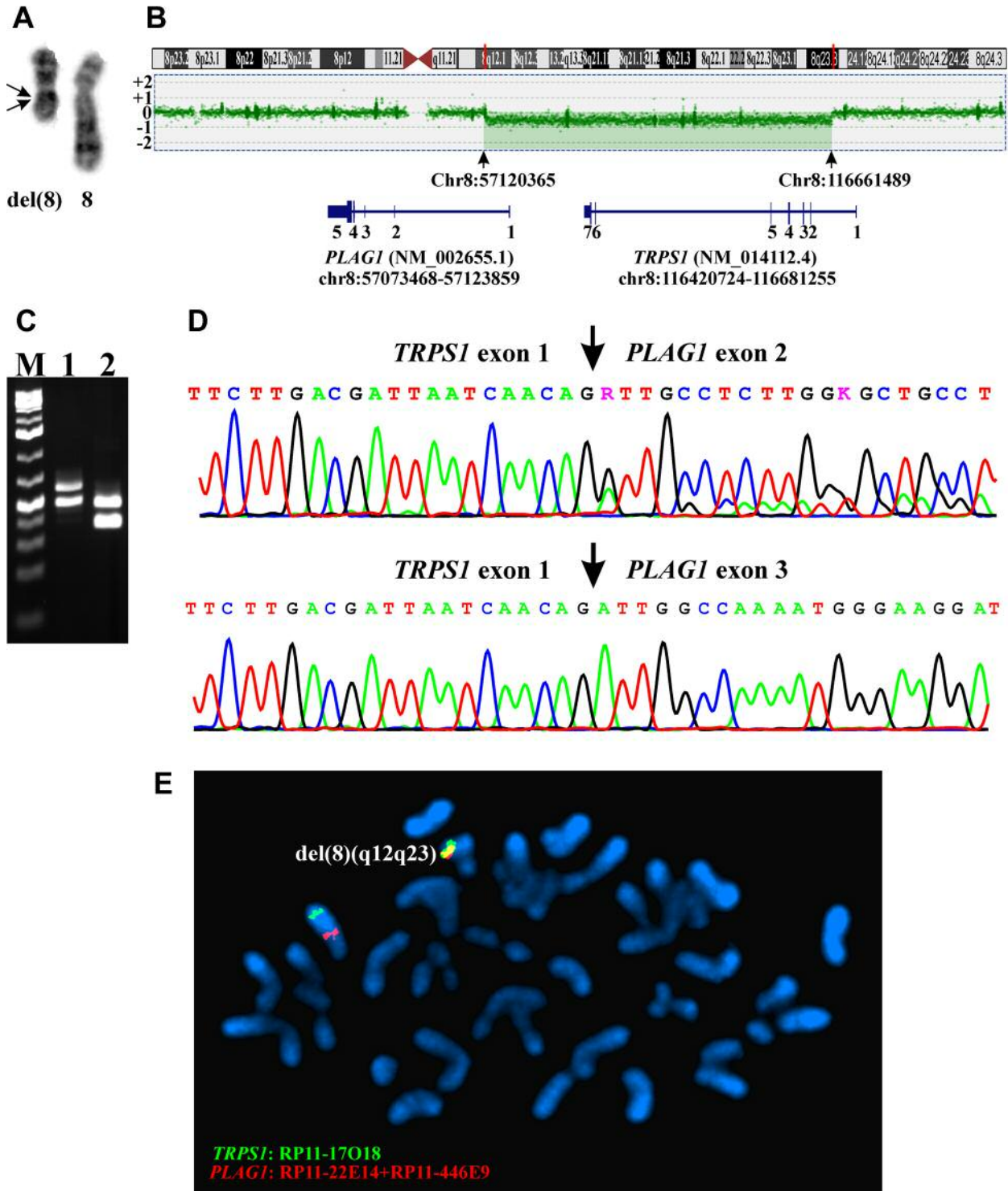


Figure 4. Genetic analyses of the case 2 of chondroid syringoma. (A) Partial karyotype showing the del(8)(q12q23) and the normal chromosome 8 (breakpoints are shown by arrows). (B) aCGH showing the deletion in the q arm of chromosome 8. Based on the hg19 assembly, the deletion started at position Chr8:57120365 in intron1 of PLAG1 and ended at Chr8:116661489 in exon 1 of TRPS1. (C) Gel electrophoresis showing the amplified TRPS1-PLAG1 fragments using the primer combinations TRPS1-200F1/PLAG1-498R1 (lane 1) and TRPS1-318F1/PLAG1-458R1 (lane 2). (D) Partial sequence chromatograms of the cDNA amplified fragment showing the junction positions of exon 1 of TRPS1 with exon 2 of PLAG1 and exon 1 of TRPS1 with exon 3 of PLAG1. (E) FISH analysis on metaphase spreads with PLAG1 probe (red signal) and TRPS1 probe (green signal) showing that the TRPS1-PLAG1 fusion gene was on the del(8)(q12q23) (yellow signal). A copy of PLAG1 (red signal) and TRPS1 (green signal) is on chromosome 8.

IL performed the pathological examination. FM supervised the research. SH assisted with experimental design and writing of the article. All Authors read and approved the final article.

Acknowledgements

This work was supported by grants from Radiumhospitalets Legater.

References

- Headington JT: Mixed tumors of skin: eccrine and apocrine types. *Arch Dermatol* 84(6): 989-996, 1961. PMID: 13905736. DOI: 10.1001/archderm.1961.01580180105016
- Hernandez FJ: Mixed tumors of the skin of the salivary gland type: a light and electron microscopic study. *J Invest Dermatol* 66(1): 49-52, 1976. DOI: 10.1111/1523-1747.ep12478101
- Hirsch P and Helwig EB: Chondroid syringoma. Mixed tumor of skin, salivary gland type. *Arch Dermatol* 84(5): 835-847, 1961. PMID: 13907712. DOI: 10.1001/archderm.1961.01580170129018
- Mills SE: Mixed tumor of the skin: a model of divergent differentiation. *J Cutan Pathol* 11(5): 382-386, 1984. PMID: 6096423. DOI: 10.1111/j.1600-0560.1984.tb00395.x
- Stout AP and Gorman JG: Mixed tumors of the skin of the salivary gland type. *Cancer* 12(3): 537-543, 1959. PMID: 13652101. DOI: 10.1002/1097-0142(195905/06)12:3<537::aid-cnrcr2820120313>3.0.co;2-n
- Satter EK and Graham BS: Chondroid syringoma. *Cutis* 71(1): 49-52, 55, 2003. PMID: 12553630.
- Bekerecioglu M, Tercan M, Karakok M and Atik B: Benign chondroid syringoma: a confusing clinical diagnosis. *Eur J Plast Surg* 25(2): 316-318, 2002. DOI: 10.1007/s00238-002-0385-5
- Chen AH, Moreano EH, Houston B and Funk GF: Chondroid syringoma of the head and neck: clinical management and literature review. *Ear Nose Throat J* 75(2): 104-108, 1996. PMID: 8714424.
- Yavuzer R, Basterzi Y, Sari A, Bir F and Sezer C: Chondroid syringoma: a diagnosis more frequent than expected. *Dermatol Surg* 29(2): 179-181, 2003. PMID: 12562350. DOI: 10.1046/j.1524-4725.2003.29045.x
- Hardisson D, Linares MD and Nistal M: Giant chondroid syringoma of the axilla. *J Cutan Med Surg* 3(2): 115-117, 1998. PMID: 9822789. DOI: 10.1177/120347549800300214
- Kakitsubata Y, Theodorou SJ, Theodorou DJ, Nakahara M, Yuki Y and Yokouchi T: Giant chondroid syringoma presenting as a growing subcutaneous mass in the upper arm: MRI findings with pathologic correlation. *Joint Bone Spine* 76(6): 711-714, 2009. PMID: 19793672. DOI: 10.1016/j.jbspin.2009.04.006
- Madi K, Attanasio A, Cecunjanin F, Garcia RA, Vidershayn A and Lucido JV: Chondroid syringoma of the foot: a rare diagnosis. *J Foot Ankle Surg* 55(2): 373-378, 2016. PMID: 26015300. DOI: 10.1053/j.jfas.2014.12.032
- Mebazaa A, Trabelsi S, Denguezli M, Sriha B, Belajouza C and Nouira R: Chondroid syringoma of the arm: an unusual localization. *Dermatol Online J* 12(1): 14, 2006. PMID: 16638382.
- Okuda H, Tei N, Shimizu K, Imazu T, Yoshimura K and Kiyohara H: Chondroid syringoma of the scrotum. *Int J Urol* 15(10): 944-945, 2008. PMID: 19138288. DOI: 10.1111/j.1442-2042.2008.02112.x
- Pal S, Sengupta S, Jana S and Bose K: Fine-needle aspiration cytology of chondroid syringoma of fore arm: Report of a rare case. *J Cytol* 31(3): 171-173, 2014. PMID: 25538390. DOI: 10.4103/0970-9371.145659
- Poku JW, Sant GR and Ucci AA: Chondroid syringoma of the scrotum. *J Int Med Res* 24(6): 482-486, 1996. PMID: 8959533. DOI: 10.1177/030006059602400606
- Rogers R, Zhou F, Grunes D, Shapiro RL, Bannan M, Sirmsir A and Leung A: Chondroid syringoma of the axilla: An unusual tumor diagnosed by fine needle aspiration. *Diagn Cytopathol* 44(4): 342-346, 2016. PMID: 26800260. DOI: 10.1002/dc.23424
- Sirivella S and Gielchinsky I: Chondroid syringoma: a rare tumor of the chest wall. *Ann Thorac Surg* 89(3): 983-985, 2010. PMID: 20172178. DOI: 10.1016/j.athoracsur.2009.07.062
- Wollina U, Sturm U and Schonlebe J: Benign chondroid syringoma (mixed tumor of skin) on the flank with satellites: case report and literature review. *Wien Med Wochenschr* 164(17-18): 377-380, 2014. PMID: 25271109. DOI: 10.1007/s10354-014-0302-0
- Panagopoulos I, Gorunova L, Lund-Iversen M, Andersen K, Andersen HK, Lobmaier I, Bjerkehagen B and Heim S: Cytogenetics of spindle cell/pleomorphic lipomas: karyotyping and FISH analysis of 31 tumors. *Cancer Genomics Proteomics* 15(3): 193-200, 2018. PMID: 29695401. DOI: 10.21873/cgp.20077
- Panagopoulos I, Bjerkehagen B, Gorunova L, Taksdal I and Heim S: Rearrangement of chromosome bands 12q14~15 causing *HMGA2-SOX5* gene fusion and *HMGA2* expression in extraskeletal osteochondroma. *Oncol Rep* 34(2): 577-584, 2015. PMID: 26043835. DOI: 10.3892/or.2015.4035
- Olshen AB, Venkatraman ES, Lucito R and Wigler M: Circular binary segmentation for the analysis of array-based DNA copy number data. *Biostatistics* 5(4): 557-572, 2004. PMID: 15475419. DOI: 10.1093/biostatistics/kxh008
- Kangaspeska S, Hultsch S, Edgren H, Nicorici D, Murumagi A and Kallioniemi O: Reanalysis of RNA-sequencing data reveals several additional fusion genes with multiple isoforms. *PLoS One* 7(10): e48745, 2012. PMID: 23119097. DOI: 10.1371/journal.pone.0048745
- Kim D, Perteau G, Trapnell C, Pimentel H, Kelley R and Salzberg SL: TopHat2: accurate alignment of transcriptomes in the presence of insertions, deletions and gene fusions. *Genome Biol* 14(4): R36, 2013. PMID: 23618408. DOI: 10.1186/gb-2013-14-4-r36
- Kim D and Salzberg SL: TopHat-Fusion: an algorithm for discovery of novel fusion transcripts. *Genome Biol* 12(8): R72, 2011. PMID: 21835007. DOI: 10.1186/gb-2011-12-8-r72
- McPherson A, Hormozdiari F, Zayed A, Giuliany R, Ha G, Sun MG, Griffith M, Heravi Moussavi A, Senz J, Melnyk N, Pacheco M, Marra MA, Hirst M, Nielsen TO, Sahinalp SC, Huntsman D and Shah SP: deFuse: an algorithm for gene fusion discovery in tumor RNA-Seq data. *PLoS Comput Biol* 7(5): e1001138, 2011. PMID: 21625565. DOI: 10.1371/journal.pcbi.1001138
- Nicorici D, Satalan H, Edgren H, Kangaspeska S, Murumagi A, Kallioniemi O, Virtanen S and Kikku O: FusionCatcher – a tool for finding somatic fusion genes in paired-end RNA-sequencing data. *bioRxiv*, 2014. DOI: 10.1101/011650
- Vu TN, Deng W, Trac QT, Calza S, Hwang W and Pawitan Y: A fast detection of fusion genes from paired-end RNA-seq data. *BMC Genomics* 19(1): 786, 2018. PMID: 30382840. DOI: 10.1186/s12864-018-5156-1

- 29 Panagopoulos I, Gorunova L, Bjerkehagen B and Heim S: The “grep” command but not FusionMap, FusionFinder or ChimeraScan captures the *CIC-DUX4* fusion gene from whole transcriptome sequencing data on a small round cell tumor with t(4;19)(q35;q13). *PLoS One* 9(6): e99439, 2014. PMID: 24950227. DOI: 10.1371/journal.pone.0099439
- 30 Panagopoulos I, Gorunova L, Bjerkehagen B and Heim S: Novel *KAT6B-KANSL1* fusion gene identified by RNA sequencing in retroperitoneal leiomyoma with t(10;17)(q22;q21). *PLoS One* 10(1): e0117010, 2015. PMID: 25621995. DOI: 10.1371/journal.pone.0117010
- 31 Altschul SF, Gish W, Miller W, Myers EW and Lipman DJ: Basic local alignment search tool. *J Mol Biol* 215(3): 403-410, 1990. PMID: 2231712. DOI: 10.1016/S0022-2836(05)80360-2
- 32 Zhu G, Benayed R, Ho C, Mullaney K, Sukhadia P, Rios K, Berry R, Rubin BP, Nafa K, Wang L, Klimstra DS, Ladanyi M and Hameed MR: Diagnosis of known sarcoma fusions and novel fusion partners by targeted RNA sequencing with identification of a recurrent *ACTB-FOSB* fusion in pseudomyogenic hemangioendothelioma. *Mod Pathol* 32(5): 609-620, 2019. PMID: 30459475. DOI: 10.1038/s41379-018-0175-7
- 33 Arias-Stella JA, 3rd, Benayed R, Oliva E, Young RH, Hoang LN, Lee CH, Jungbluth AA, Frosina D, Soslow RA, Antonescu CR, Ladanyi M and Chiang S: Novel *PLAG1* gene rearrangement distinguishes a subset of uterine myxoid leiomyosarcoma from other uterine myxoid mesenchymal tumors. *Am J Surg Pathol* 43(3): 382-388, 2019. PMID: 30489320. DOI: 10.1097/PAS.0000000000001196
- 34 Hornick JL and Fletcher CD: Cutaneous myoepithelioma: a clinicopathologic and immunohistochemical study of 14 cases. *Hum Pathol* 35(1): 14-24, 2004. PMID: 14745720. DOI: 10.1016/j.humpath.2003.08.016
- 35 Jo VY and Fletcher CD: Myoepithelial neoplasms of soft tissue: an updated review of the clinicopathologic, immunophenotypic, and genetic features. *Head Neck Pathol* 9(1): 32-38, 2015. PMID: 25804378. DOI: 10.1007/s12105-015-0618-0
- 36 Jo VY: Myoepithelial tumors: an update. *Surg Pathol Clin* 8(3): 445-466, 2015. PMID: 26297065. DOI: 10.1016/j.path.2015.05.005
- 37 Kutzner H, Mentzel T, Kaddu S, Soares LM, Sanguenza OP and Requena L: Cutaneous myoepithelioma: an under-recognized cutaneous neoplasm composed of myoepithelial cells. *Am J Surg Pathol* 25(3): 348-355, 2001. PMID: 11224605. DOI: 10.1097/0000478-200103000-00009
- 38 Mentzel T, Requena L, Kaddu S, Soares de Aleida LM, Sanguenza OP and Kutzner H: Cutaneous myoepithelial neoplasms: clinicopathologic and immunohistochemical study of 20 cases suggesting a continuous spectrum ranging from benign mixed tumor of the skin to cutaneous myoepithelioma and myoepithelial carcinoma. *J Cutan Pathol* 30(5): 294-302, 2003. PMID: 12753168. DOI: 10.1034/j.1600-0560.2003.00063.x
- 39 Panagopoulos I, Gorunova L, Lund-Iversen M, Bassarova A and Heim S: Fusion of the genes *PHF1* and *TFE3* in malignant chondroid syringoma. *Cancer Genomics Proteomics* 16(5): 345-351, 2019. PMID: 31467228. DOI: 10.21873/cgp.20139
- 40 Antonescu CR, Zhang L, Chang NE, Pawel BR, Travis W, Katabi N, Edelman M, Rosenberg AE, Nielsen GP, Dal Cin P and Fletcher CD: *EWSRI-POU5F1* fusion in soft tissue myoepithelial tumors. A molecular analysis of sixty-six cases, including soft tissue, bone, and visceral lesions, showing common involvement of the *EWSRI* gene. *Genes Chromosomes Cancer* 49(12): 1114-1124, 2010. PMID: 20815032. DOI: 10.1002/gcc.20819
- 41 Antonescu CR, Zhang L, Shao SY, Mosquera JM, Weinreb I, Katabi N and Fletcher CD: Frequent *PLAG1* gene rearrangements in skin and soft tissue myoepithelioma with ductal differentiation. *Genes Chromosomes Cancer* 52(7): 675-682, 2013. PMID: 23630011. DOI: 10.1002/gcc.22063
- 42 Bahrami A, Dalton JD, Krane JF and Fletcher CD: A subset of cutaneous and soft tissue mixed tumors are genetically linked to their salivary gland counterpart. *Genes Chromosomes Cancer* 51(2): 140-148, 2012. PMID: 22038920. DOI: 10.1002/gcc.20938
- 43 Brandal P, Panagopoulos I, Bjerkehagen B, Gorunova L, Skjeldal S, Micci F and Heim S: Detection of a t(1;22)(q23;q12) translocation leading to an *EWSRI-PBX1* fusion gene in a myoepithelioma. *Genes Chromosomes Cancer* 47(7): 558-564, 2008. PMID: 18383210. DOI: 10.1002/gcc.20559
- 44 Brandal P, Panagopoulos I, Bjerkehagen B and Heim S: t(19;22)(q13;q12) Translocation leading to the novel fusion gene *EWSRI-ZNF444* in soft tissue myoepithelial carcinoma. *Genes Chromosomes Cancer* 48(12): 1051-1056, 2009. PMID: 19760602. DOI: 10.1002/gcc.20706
- 45 Flucke U, Palmedo G, Blankenhorn N, Slootweg PJ, Kutzner H and Mentzel T: *EWSRI* gene rearrangement occurs in a subset of cutaneous myoepithelial tumors: a study of 18 cases. *Mod Pathol* 24(11): 1444-1450, 2011. PMID: 21725291. DOI: 10.1038/modpathol.2011.108
- 46 Hallor KH, Teixeira MR, Fletcher CD, Bizarro S, Staaf J, Domanski HA, von Steyern FV, Panagopoulos I, Mandahl N and Mertens F: Heterogeneous genetic profiles in soft tissue myoepitheliomas. *Mod Pathol* 21(11): 1311-1319, 2008. PMID: 18604193. DOI: 10.1038/modpathol.2008.124
- 47 Agaram NP, Chen HW, Zhang L, Sung YS, Panicek D, Healey JH, Nielsen GP, Fletcher CD and Antonescu CR: *EWSRI-PBX3*: a novel gene fusion in myoepithelial tumors. *Genes Chromosomes Cancer* 54(2): 63-71, 2015. PMID: 25231231. DOI: 10.1002/gcc.22216
- 48 Matsuyama A, Hisaoka M and Hashimoto H: *PLAG1* expression in cutaneous mixed tumors: an immunohistochemical and molecular genetic study. *Virchows Arch* 459(5): 539-545, 2011. PMID: 21927843. DOI: 10.1007/s00428-011-1149-z
- 49 Russell-Goldman E, Dubuc A and Hanna J: Differential expression of *PLAG1* in apocrine and eccrine cutaneous mixed tumors: evidence for distinct molecular pathogenesis. *Am J Dermatopathol*, 2019. PMID: 30839344. DOI: 10.1097/DAD.0000000000001393
- 50 Asp J, Persson F, Kost-Alimova M and Stenman G: *CHCHD7-PLAG1* and *TCEA1-PLAG1* gene fusions resulting from cryptic, intrachromosomal 8q rearrangements in pleomorphic salivary gland adenomas. *Genes Chromosomes Cancer* 45(9): 820-828, 2006. PMID: 16736500. DOI: 10.1002/gcc.20346
- 51 Kas K, Voz ML, Roijer E, Åström AK, Meyen E, Stenman G and Van de Ven WJ: Promoter swapping between the genes for a novel zinc finger protein and beta-catenin in pleiomorphic adenomas with t(3;8)(p21;q12) translocations. *Nat Genet* 15(2): 170-174, 1997. PMID: 9020842. DOI: 10.1038/ng0297-170
- 52 Voz ML, Åström AK, Kas K, Mark J, Stenman G and Van de Ven WJ: The recurrent translocation t(5;8)(p13;q12) in pleomorphic adenomas results in upregulation of *PLAG1* gene expression under control of the *LIFR* promoter. *Oncogene* 16(11): 1409-1416, 1998. PMID: 9525740. DOI: 10.1038/sj.onc.1201660

- 53 Kas K, Voz ML, Hensen K, Meyen E and Van de Ven WJ: Transcriptional activation capacity of the novel PLAG family of zinc finger proteins. *J Biol Chem* 273(36): 23026-23032, 1998. PMID: 9722527. DOI: 10.1074/jbc.273.36.23026
- 54 Van Dyck F, Declercq J, Braem CV and Van de Ven WJ: *PLAG1*, the prototype of the PLAG gene family: versatility in tumour development (review). *Int J Oncol* 30(4): 765-774, 2007. PMID: 17332914.
- 55 Juma AR, Dandimopoulou PE, Grommen SV, Van de Ven WJ and De Groef B: Emerging role of *PLAG1* as a regulator of growth and reproduction. *J Endocrinol* 228(2): R45-56, 2016. PMID: 26577933. DOI: 10.1530/JOE-15-0449
- 56 Åström AK, Voz ML, Kas K, Roijer E, Wedell B, Mandahl N, Van de Ven W, Mark J and Stenman G: Conserved mechanism of *PLAG1* activation in salivary gland tumors with and without chromosome 8q12 abnormalities: identification of SII as a new fusion partner gene. *Cancer Res* 59(4): 918-923, 1999. PMID: 10029085.
- 57 Hibbard MK, Kozakewich HP, Dal Cin P, Sciort R, Tan X, Xiao S and Fletcher JA: *PLAG1* fusion oncogenes in lipoblastoma. *Cancer Res* 60(17): 4869-4872, 2000. PMID: 10987300.
- 58 Abdollahi A, Pisarcik D, Roberts D, Weinstein J, Cairns P and Hamilton TC: *LOT1 (PLAGL1/ZAC1)*, the candidate tumor suppressor gene at chromosome 6q24-25, is epigenetically regulated in cancer. *J Biol Chem* 278(8): 6041-6049, 2003. PMID: 12473647. DOI: 10.1074/jbc.M210361200
- 59 Valleley EM, Cordery SF, Carr IM, MacLennan KA and Bonthron DT: Loss of expression of *ZAC/PLAGL1* in diffuse large B-cell lymphoma is independent of promoter hypermethylation. *Genes Chromosomes Cancer* 49(5): 480-486, 2010. PMID: 20175198. DOI: 10.1002/gcc.20758
- 60 Peille AL, Brouste V, Kauffmann A, Lagarde P, Le Morvan V, Coindre JM, Chibon F and Bresson-Bepoldin L: Prognostic value of *PLAGL1*-specific CpG site methylation in soft-tissue sarcomas. *PLoS One* 8(11): e80741, 2013. PMID: 24260468. DOI: 10.1371/journal.pone.0080741
- 61 Li Z, Ding Y, Zhu Y, Yin M, Le X, Wang L, Yang Y and Zhang Q: Both gene deletion and promoter hyper-methylation contribute to the down-regulation of *ZAC/PLAGL1* gene in gastric adenocarcinomas: a case control study. *Clin Res Hepatol Gastroenterol* 38(6): 744-750, 2014. PMID: 25091631. DOI: 10.1016/j.clinre.2013.06.007
- 62 Godlewski J, Krazinski BE, Kowalczyk AE, Kiewisz J, Kiezun J, Kwiatkowski P, Sliwinska-Jewsiewicka A, Maslowski Z and Kmiec Z: *PLAGL1 (ZAC1/LOT1)* expression in clear cell renal cell carcinoma: correlations with disease progression and unfavorable prognosis. *Anticancer Res* 36(2): 617-624, 2016. PMID: 26851016.
- 63 Liu Y, Easton J, Shao Y, Maciaszek J, Wang Z, Wilkinson MR, McCastlain K, Edmonson M, Pounds SB, Shi L, Zhou X, Ma X, Sioson E, Li Y, Rusch M, Gupta P, Pei D, Cheng C, Smith MA, Auvil JG, Gerhard DS, Relling MV, Winick NJ, Carroll AJ, Heerema NA, Raetz E, Devidas M, Willman CL, Harvey RC, Carroll WL, Dunsmore KP, Winter SS, Wood BL, Sorrentino BP, Downing JR, Loh ML, Hunger SP, Zhang J and Mullighan CG: The genomic landscape of pediatric and young adult T-lineage acute lymphoblastic leukemia. *Nat Genet* 49(8): 1211-1218, 2017. PMID: 28671688. DOI: 10.1038/ng.3909
- 64 Qian M, Zhang H, Kham SK, Liu S, Jiang C, Zhao X, Lu Y, Goodings C, Lin TN, Zhang R, Moriyama T, Yin Z, Li Z, Quah TC, Ariffin H, Tan AM, Shen S, Bhojwani D, Hu S, Chen S, Zheng H, Pui CH, Yeoh AE and Yang JJ: Whole-transcriptome sequencing identifies a distinct subtype of acute lymphoblastic leukemia with predominant genomic abnormalities of EP300 and CREBBP. *Genome Res* 27(2): 185-195, 2017. PMID: 27903646. DOI: 10.1101/gr.209163.116
- 65 Seki M, Kimura S, Isobe T, Yoshida K, Ueno H, Nakajima-Takagi Y, Wang C, Lin L, Kon A, Suzuki H, Shiozawa Y, Kataoka K, Fujii Y, Shiraishi Y, Chiba K, Tanaka H, Shimamura T, Masuda K, Kawamoto H, Ohki K, Kato M, Arakawa Y, Koh K, Hanada R, Moritake H, Akiyama M, Kobayashi R, Deguchi T, Hashii Y, Imamura T, Sato A, Kiyokawa N, Oka A, Hayashi Y, Takagi M, Manabe A, Ohara A, Horibe K, Sanada M, Iwama A, Mano H, Miyano S, Ogawa S and Takita J: Recurrent SPI1 (PU.1) fusions in high-risk pediatric T cell acute lymphoblastic leukemia. *Nat Genet* 49(8): 1274-1281, 2017. PMID: 28671687. DOI: 10.1038/ng.3900
- 66 Hensen K, Van Valckenborgh IC, Kas K, Van de Ven WJ and Voz ML: The tumorigenic diversity of the three PLAG family members is associated with different DNA binding capacities. *Cancer Res* 62(5): 1510-1517, 2002. PMID: 11888928.
- 67 Landrette SF, Kuo YH, Hensen K, Barjesteh van Waalwijk van Doorn-Khosrovani S, Perrat PN, Van de Ven WJ, Delwel R and Castilla LH: *Plag1* and *Plag2* are oncogenes that induce acute myeloid leukemia in cooperation with *Chfb-MYH11*. *Blood* 105(7): 2900-2907, 2005. PMID: 15585652. DOI: 10.1182/blood-2004-09-3630
- 68 Li N, Li D, Du Y, Su C, Yang C, Lin C, Li X and Hu G: Overexpressed *PLAGL2* transcriptionally activates Wnt6 and promotes cancer development in colorectal cancer. *Oncol Rep* 41(2): 875-884, 2019. PMID: 30535429. DOI: 10.3892/or.2018.6914
- 69 Qu G, Xu Y, Wan SP and Yang G: Expression of *PLAGL2* in bladder urothelial carcinoma and its relationship to lymph node metastasis and survival. *Sci Rep* 8(1): 6044, 2018. PMID: 29662235. DOI: 10.1038/s41598-018-24526-5
- 70 Su C, Li D, Li N, Du Y, Yang C, Bai Y, Lin C, Li X and Zhang Y: Studying the mechanism of *PLAGL2* overexpression and its carcinogenic characteristics based on 3'-untranslated region in colorectal cancer. *Int J Oncol*, 2018. PMID: 29512763. DOI: 10.3892/ijo.2018.4305
- 71 Zhou J, Liu H, Zhang L, Liu X, Zhang C, Wang Y, He Q, Zhang Y, Li Y, Chen Q, Zhang L, Wang K, Bu Y and Lei Y: DJ-1 promotes colorectal cancer progression through activating *PLAGL2/Wnt/BMP4* axis. *Cell Death Dis* 9(9): 865, 2018. PMID: 30158634. DOI: 10.1038/s41419-018-0883-4
- 72 Voz ML, Agten NS, Van de Ven WJ and Kas K: *PLAG1*, the main translocation target in pleomorphic adenoma of the salivary glands, is a positive regulator of IGF-II. *Cancer Res* 60(1): 106-113, 2000. PMID: 10646861.
- 73 Voz ML, Mathys J, Hensen K, Pendeville H, Van Valckenborgh I, Van Huffel C, Chavez M, Van Damme B, De Moor B, Moreau Y and Van de Ven WJ: Microarray screening for target genes of the proto-oncogene *PLAG1*. *Oncogene* 23(1): 179-191, 2004. PMID: 14712223. DOI: 10.1038/sj.onc.1207013
- 74 Declercq J, Van Dyck F, Van Damme B and Van de Ven WJ: Upregulation of Igf and Wnt signalling associated genes in pleomorphic adenomas of the salivary glands in *PLAG1* transgenic mice. *Int J Oncol* 32(5): 1041-1047, 2008. PMID: 18425330.
- 75 Wang Y, Shang W, Lei X, Shen S, Zhang H, Wang Z, Huang L, Yu Z, Ong H, Yin X, Yang W and Zhang C: Opposing functions

- of *PLAG1* in pleomorphic adenoma: a microarray analysis of *PLAG1* transgenic mice. *Biotechnol Lett* 35(9): 1377-1385, 2013. PMID: 23690029. DOI: 10.1007/s10529-013-1213-7
- 76 Declercq J, Skaland I, Van Dyck F, Janssen EA, Baak JP, Drijckoning M and Van de Ven WJ: Adenomyoepitheliomatous lesions of the mammary glands in transgenic mice with targeted *PLAG1* overexpression. *Int J Cancer* 123(7): 1593-1600, 2008. PMID: 18649356. DOI: 10.1002/ijc.23586
- 77 Declercq J, Van Dyck F, Braem CV, Van Valckenborgh IC, Voz M, Wassef M, Schoonjans L, Van Damme B, Fiette L and Van de Ven WJ: Salivary gland tumors in transgenic mice with targeted *PLAG1* proto-oncogene overexpression. *Cancer Res* 65(11): 4544-4553, 2005. PMID: 15930271. DOI: 10.1158/0008-5472.CAN-04-4041
- 78 Zhao X, Ren W, Yang W, Wang Y, Kong H, Wang L, Yan L, Xu G, Fei J, Fu J, Zhang C and Wang Z: Wnt pathway is involved in pleomorphic adenomas induced by overexpression of *PLAG1* in transgenic mice. *Int J Cancer* 118(3): 643-648, 2006. PMID: 16108035. DOI: 10.1002/ijc.21400
- 79 Xu W, Liu L, Lu H, Fu J, Zhang C, Yang W and Shen S: Dysregulated long noncoding RNAs in pleomorphic adenoma tissues of pleomorphic adenoma gene 1 transgenic mice. *Mol Med Rep* 19(6): 4735-4742, 2019. PMID: 31059011. DOI: 10.3892/mmr.2019.10149
- 80 Hu X, Wang Q, Tang M, Barthel F, Amin S, Yoshihara K, Lang FM, Martinez-Ledesma E, Lee SH, Zheng S and Verhaak RGW: TumorFusions: an integrative resource for cancer-associated transcript fusions. *Nucleic Acids Res* 46(D1): D1144-D1149, 2018. PMID: 29099951. DOI: 10.1093/nar/gkx1018
- 81 Yoshida H, Miyachi M, Ouchi K, Kuwahara Y, Tsuchiya K, Iehara T, Konishi E, Yanagisawa A and Hosoi H: Identification of *COL3A1* and *RAB2A* as novel translocation partner genes of *PLAG1* in lipoblastoma. *Genes Chromosomes Cancer* 53(7): 606-611, 2014. PMID: 24700772. DOI: 10.1002/gcc.22170
- 82 Persson F, Winnes M, Andrén Y, Wedell B, Dahlenfors R, Asp J, Mark J, Enlund F and Stenman G: High-resolution array CGH analysis of salivary gland tumors reveals fusion and amplification of the *FGFR1* and *PLAG1* genes in ring chromosomes. *Oncogene* 27(21): 3072-3080, 2008. PMID: 18059337. DOI: 10.1038/sj.onc.1210961
- 83 Deen M, Ebrahim S, Schloff D and Mohamed AN: A novel *PLAG1-RAD51L1* gene fusion resulting from a t(8;14)(q12;q24) in a case of lipoblastoma. *Cancer Genet* 206(6): 233-237, 2013. PMID: 23890983. DOI: 10.1016/j.cancergen.2013.05.019

Received January 23, 2020

Revised February 4, 2020

Accepted February 6, 2020